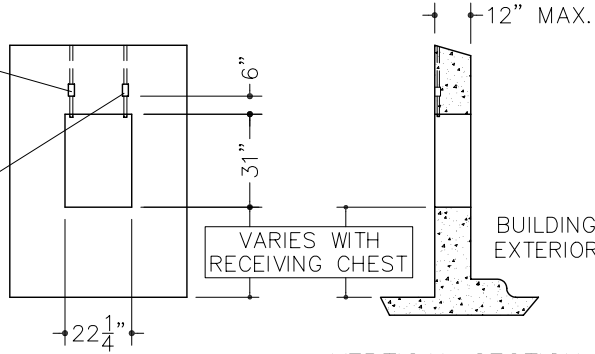


2 X 4 JUNCTION BOX WITH  
3/4" CONDUIT & COVER  
FOR 120V 15A SERVICE  
TO DEPOSITORY SIGN

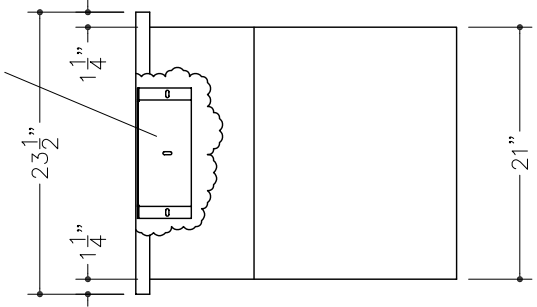
2 X 4 JUNCTION BOX WITH  
3/4" CONDUIT & COVER  
FOR ALARM CONNECTION

FINISHED FLOOR LINE



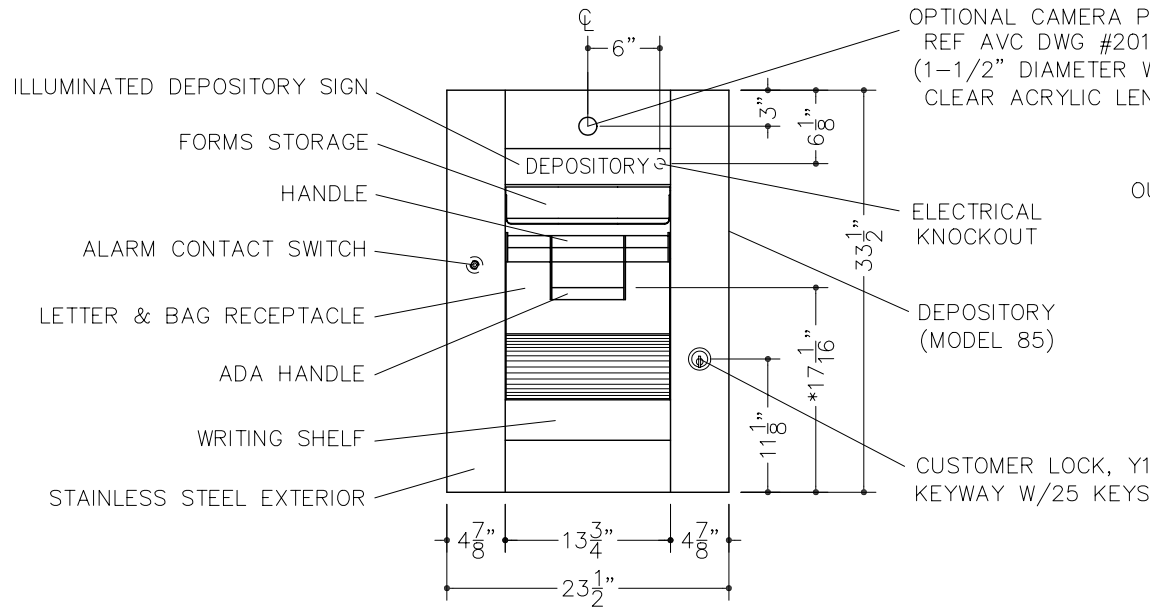
VERTICAL SECTION

OPTIONAL CAMERA MOUNT KIT  
REF AVC DWG #20150  
(SET-UP TO RECEIVE SANYO  
CUBE CAMERA AND LENS)

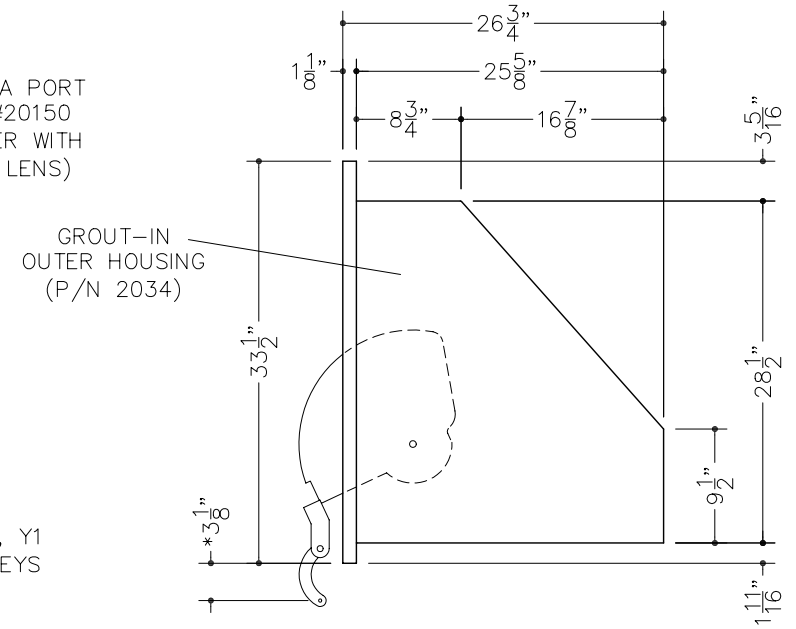


PLAN

FINISHED OPENING  
INTERIOR ELEVATION



EXTERIOR ELEVATION (\*ADA HANDLE CLOSED POSITION)



SIDE ELEVATION (\*ADA HANDLE OPEN POSITION)

NOTES:

1. OUTER HOUSING (P/N 2034, SHOWN) IS FOR GROUT-IN INSTALLATION.
2. WELD HOUSING TO RECEIVING CHEST (NOT SHOWN) BEFORE INSTALLATION.
3. HOUSING REQUIRES ENCASEMENT IN 6" OF CONCRETE.

APPROXIMATE WEIGHTS:  
DEPOSITORY: 280 LBS.  
HOUSING: 100 LBS.



**American Vault<sup>®</sup>.us**

PRODUCT APPLICATION DRAWING  
2000 SERIES DEPOSITORY  
WITH GROUT-IN OUTER HOUSING  
MODEL 85-2034

SIZE	DWG NO	DATE	SHEET
A	20005	03.04.2013	1 OF 1