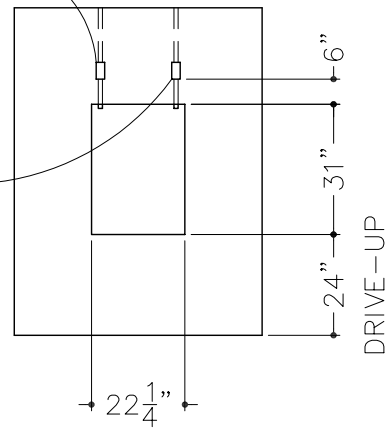


2 x 4 JUNCTION BOX WITH
3/4" CONDUIT & COVER
PLATE FOR 120 v, 15 amp
SERVICE TO DEPOSITORY SIGN

2 x 4 JUNCTION BOX WITH
3/4" CONDUIT & COVER
PLATE FOR ALARM

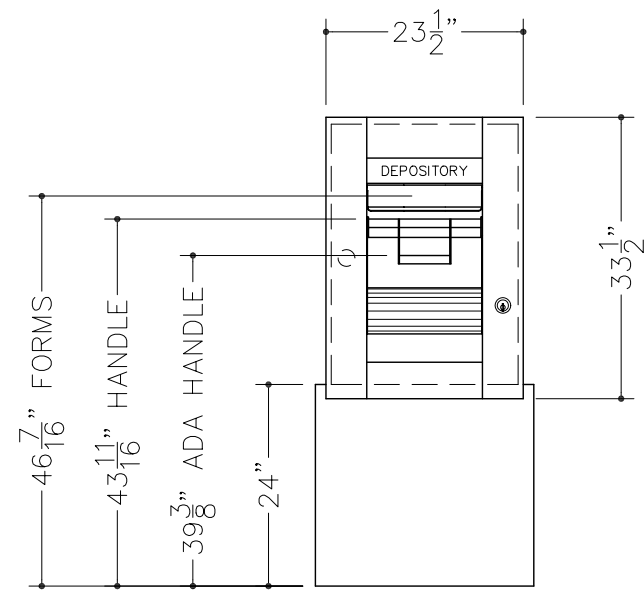
FINISHED FLOOR LINE



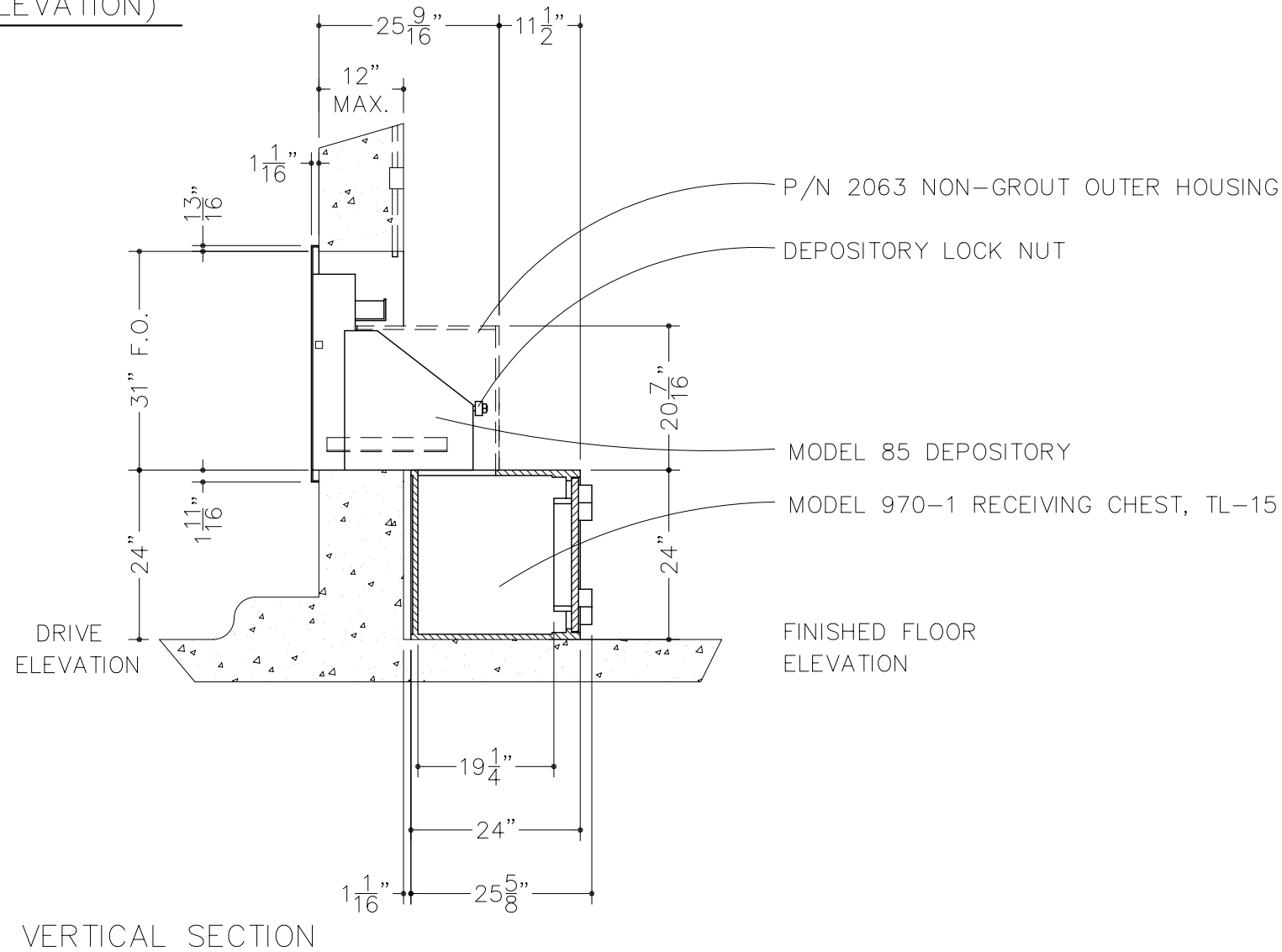
FINISHED OPENING (INTERIOR ELEVATION)

NOTES:

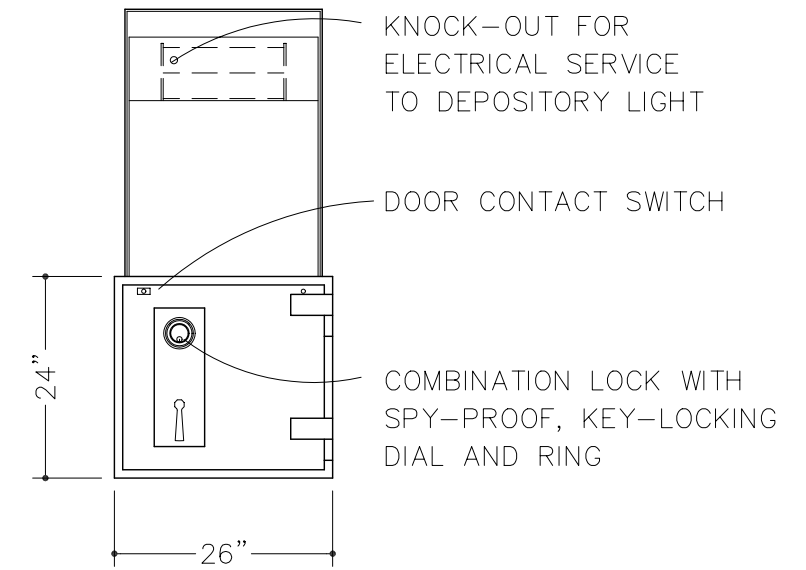
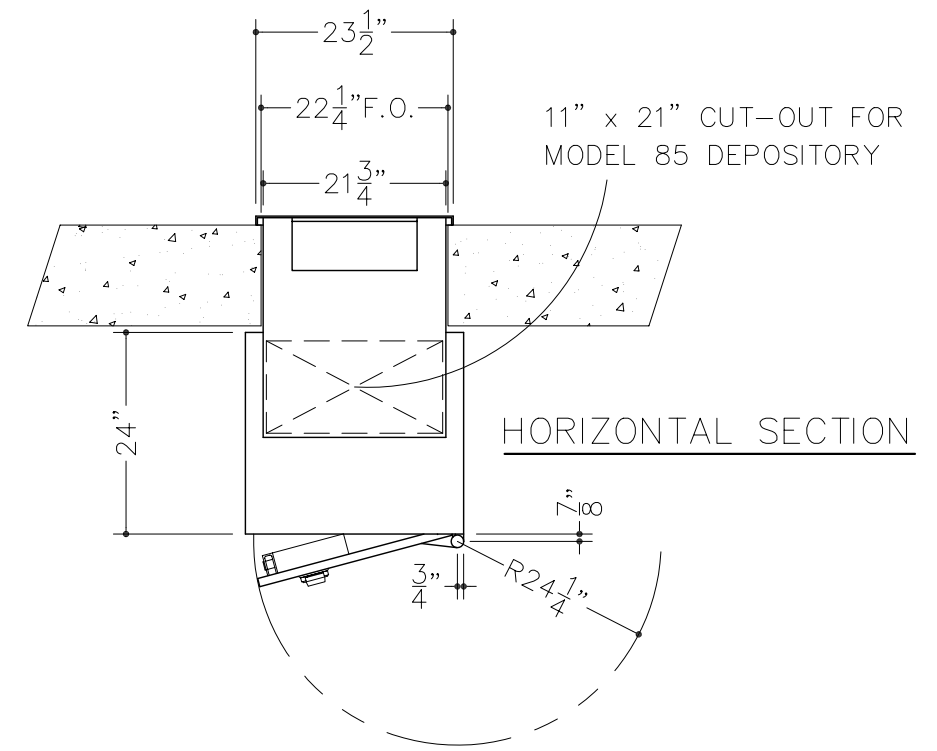
1. APPROXIMATE WEIGHT (CHEST ONLY): 575 LBS.
2. FINISH: BEIGE
3. RIGHT SWING SHOWN, LEFT SWING OPPOSITE.
4. P/N 2063 NON-GROUT OUTER HOUSING IS TO BE WELDED TO RECEIVING CHEST AND SHOULD NOT BE ENCASED IN CONCRETE.
5. INTERIOR WALL OPENING AROUND OUTER HOUSING IS TO BE FILLED (BY OTHERS) USING APPROPRIATE MATERIALS.



EXTERIOR ELEVATION



VERTICAL SECTION



INTERIOR ELEVATION

CAUTION!
ONLY PROFESSIONALS EXPERIENCED
AND QUALIFIED IN THE INSTALLATION
OF SAFES SHOULD INSTALL THIS
PRODUCT.

DO NOT SCALE

American
Vault®.us

PRODUCT APPLICATION DRAWING
MOD 970-1 TL-15 RECEIVING CHEST
W/MOD 85 DEPOSITORY



SIZE	DWG NO	DATE	SHEET
B	20043	01.01.2012	1 OF 1