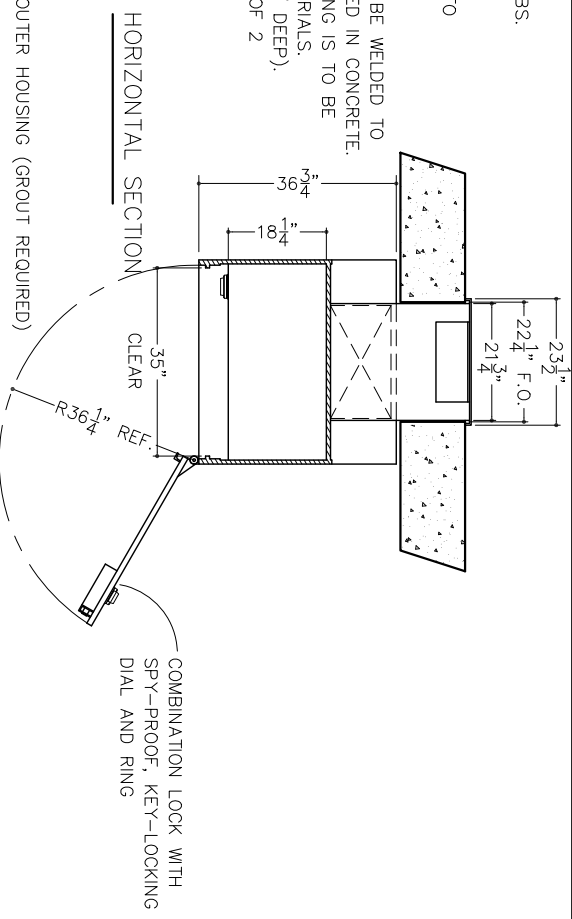
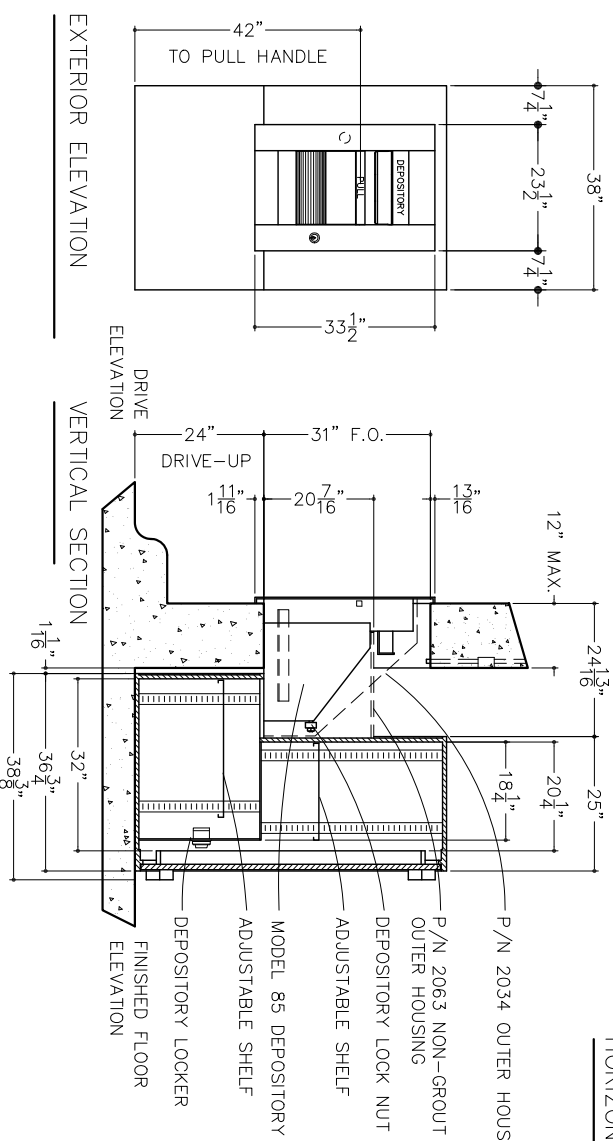


- NOTES:
1. APPROXIMATE WEIGHT (CHEST ONLY) : 1,865 LBS.
 2. FINISH: TAUPE
 3. RIGHT SWING SHOWN, LEFT SWING OPPOSITE.
 4. P/N 2034 OUTER HOUSING IS TO BE WELDED TO RECEIVING CHEST AND REQUIRES ENCASUREMENT IN 6" OF CONCRETE.
 5. P/N 2063 NON-GROUT OUTER HOUSING IS TO BE WELDED TO RECEIVING CHEST AND SHOULD NOT BE ENCASSED IN CONCRETE.
 6. INTERIOR WALL OPENING AROUND OUTER HOUSING IS TO BE FILLED (BY OTHERS) USING APPROPRIATE MATERIALS.
 7. SET-UP TO RECEIVE 500 SERIES LOCKERS (18" DEEP). REFERENCE LOCKER SPECIFICATIONS, SHEET 2 OF 2

FINISHED OPENING (INTERIOR ELEVATION)

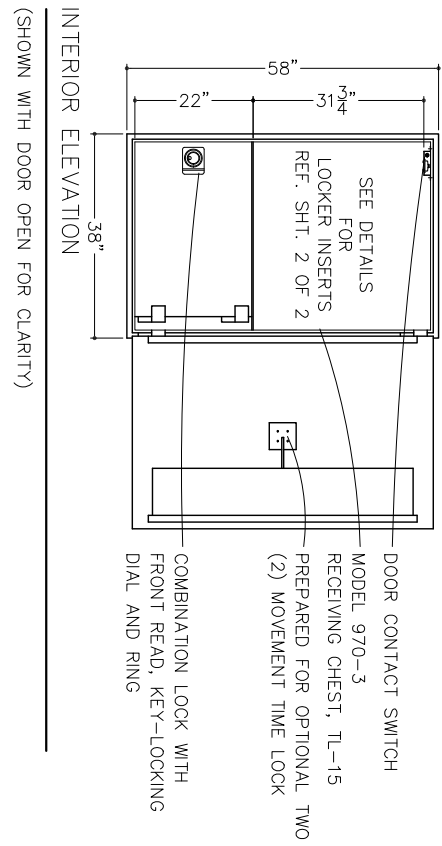


HORIZONTAL SECTION



EXTERIOR ELEVATION

VERTICAL SECTION



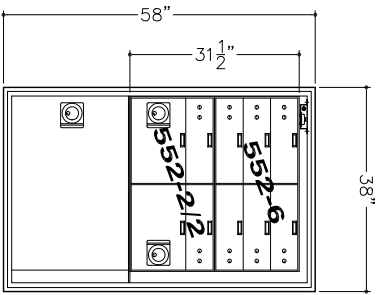
INTERIOR ELEVATION

CAUTION!
 ONLY PROFESSIONALS EXPERIENCED AND QUALIFIED IN THE INSTALLATION OF SAFES SHOULD INSTALL THIS PRODUCT.

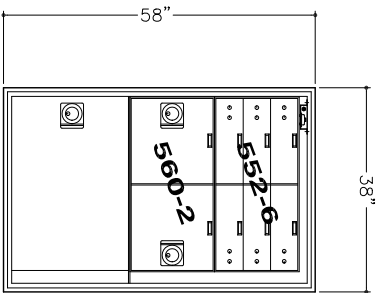
DESCRIPTION PRODUCT APPLICATION DRAWING
 MODEL 970-3 RECEIVING CHEST SHOWN WITH
 MODEL 85 DEPOSITORY INSTALLED

SIZE	DWG. NO.	DATE	SCALE
B	20045	01.09.09	NONE
			SHEET 1 of 2

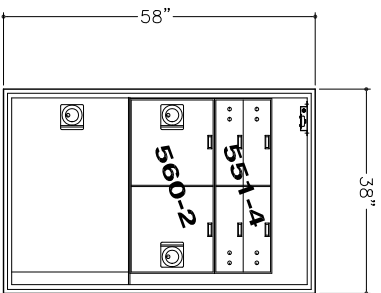
UL LISTED



MODEL 970-3 (8/2)
 (8) 5 x 16 TELLER LOCKERS
 (2) 10 x 16 CASH LOCKERS



MODEL 970-3 (6/2)
 (6) 5 x 16 TELLER LOCKERS
 (2) 15 x 16 CASH LOCKERS



MODEL 970-3 (4/2)
 (4) 5 x 16 TELLER LOCKERS
 (2) 15 x 16 CASH LOCKERS

CAUTION!
 ONLY PROFESSIONALS EXPERIENCED
 AND QUALIFIED IN THE INSTALLATION
 OF SAFES SHOULD INSTALL THIS
 PRODUCT.



American
 Vault[®] Waco, Texas

DESCRIPTION PRODUCT APPLICATION DRAWING
 MODEL 970-3 RECEIVING CHEST
 SHOWN WITH
 MODEL 85 DEPOSITORY INSTALLED

SIZE	DWG. NO.	DATE	SCALE
B	20045	01.09.09	NONE
			SHEET 2 of 2