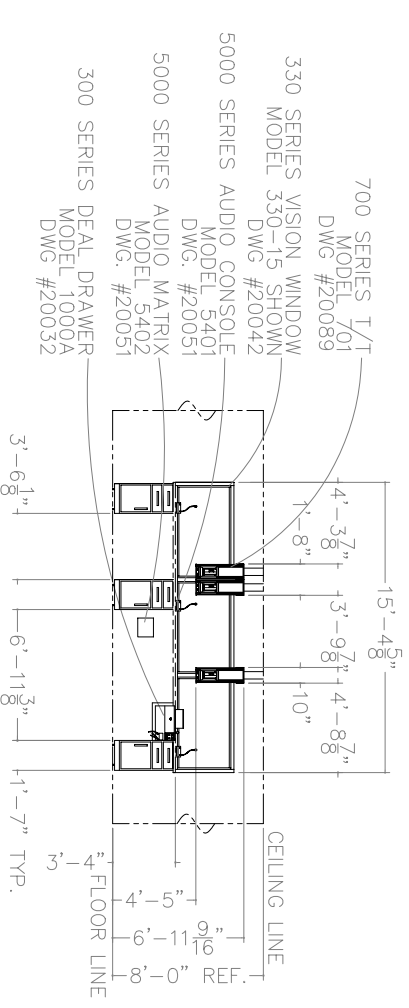
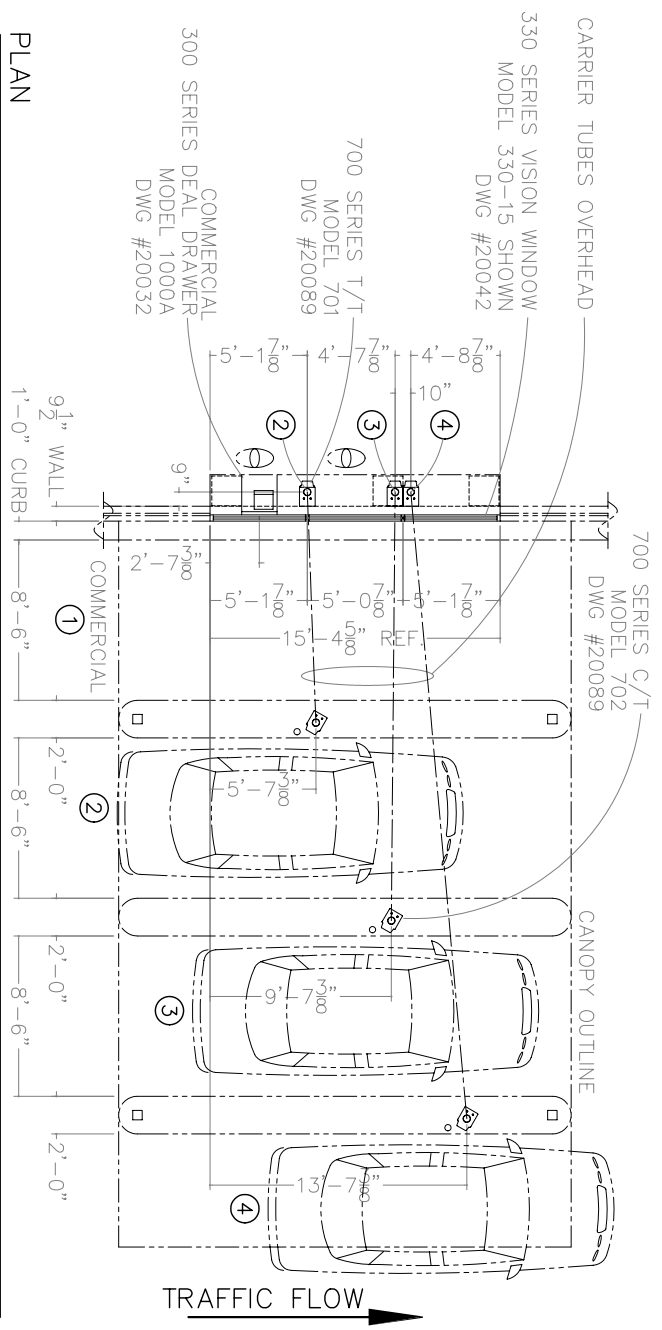


ISLAND DETAIL
(OVERHEAD CONDUIT INSTALLATION)
NOTE: ISLAND IS TO BE SMOOTH AND LEVEL

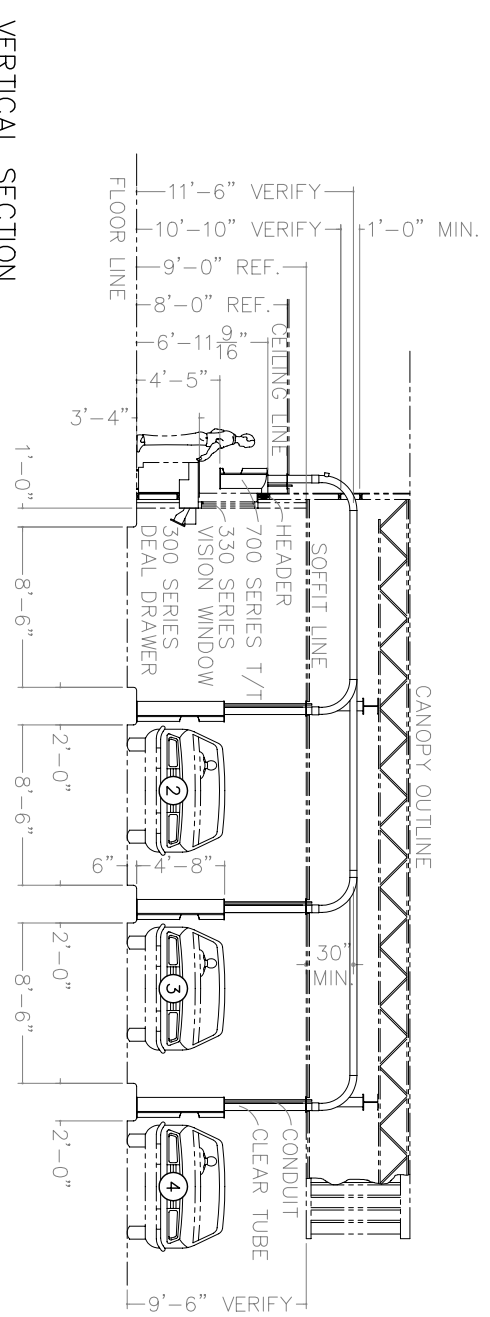


INTERIOR ELEVATION

- GENERAL NOTES:**
1. ALL CONDUIT & PROPER ROUTING OF SUCH BY OTHERS.
 2. ALL PROTECTIVE BOLLARDS BY OTHERS.
 3. G.C. IS TO PROVIDE OPENINGS INTO BUILDING FOR ROUTING OF TUBES AND SUCH. G.C. IS TO COVER OPENINGS AFTER INSTALLATION.
 4. ELECTRICIAN IS TO PROPERLY LABEL ALL CIRCUITS.
 5. CANOPY CONSTRUCTION IS TO BE SUCH THAT IT ALLOWS FOR A STRAIGHT "TUBE RUN" FROM TELLER TERMINAL TO CUSTOMER TERMINAL WITHOUT OBSTRUCTIONS.
 6. CEILING AND CANOPY HEIGHTS SHOWN ARE FOR REFERENCE ONLY AND MAY VARY FROM DIMENSIONS SHOWN.



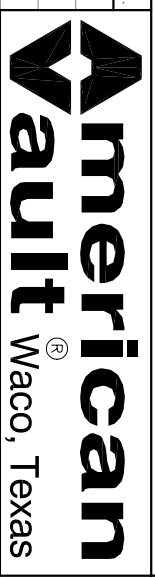
PLAN



VERTICAL SECTION

REFERENCE DRAWINGS	DRAWING NO.	DESCRIPTION
1	20042	330 SERIES VISION WINDOW, MODEL 330-15
2	20032	300 SERIES DEAL DRAWER, MODEL 1000A
3	20089	700 SERIES REMOTE TRANSACTION SYSTEM
4	20051	5000 SERIES AUDIO SYSTEM, MODEL 5401 & 5402

SIZE	DWG. NO.	DATE	SCALE
B	20096	12.07.01	NONE
			SHEET 1 OF 1



DESCRIPTION PRODUCT APPLICATION DRAWING
DRIVE-UP TELLER FACILITY
3 TELLERS ON 4 LANES
(15' WINDOW/3 RTS/DEAL DRAWER)