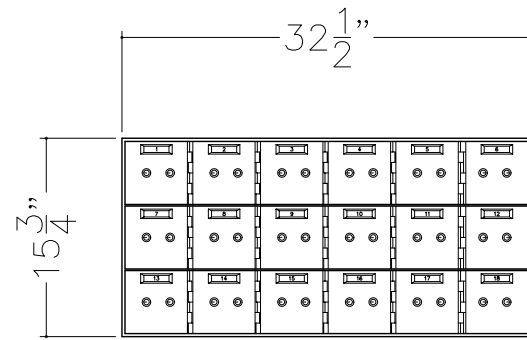
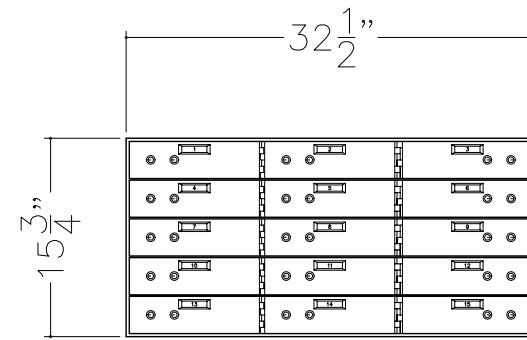


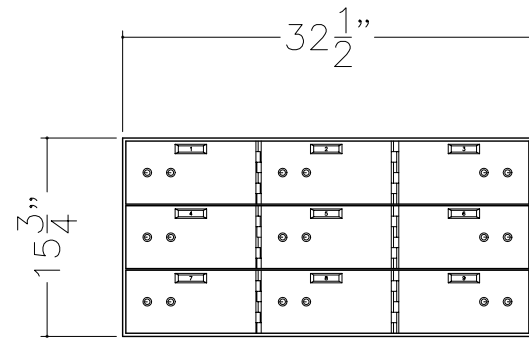
MODEL 515-30
(30) 3 x 5 OPENINGS



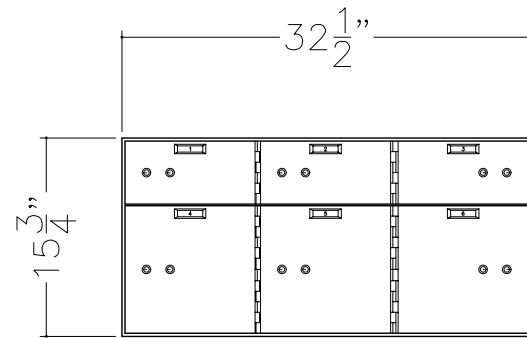
MODEL 515-18
(18) 5 x 5 OPENINGS



MODEL 515-15
(15) 3 x 10 OPENINGS



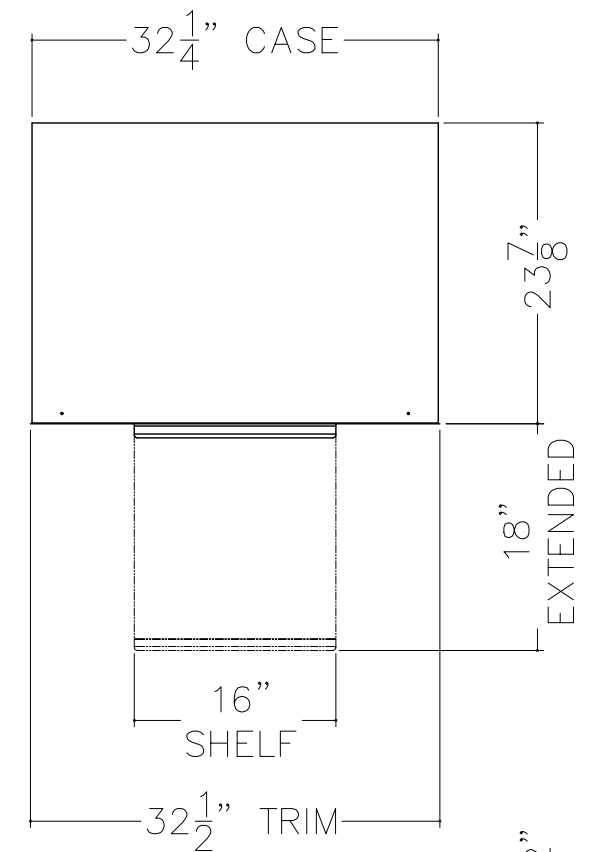
MODEL 515-9
(9) 5 x 10 OPENINGS



MODEL 515-6
(3) 5 x 10 OPENINGS
(3) 10 x 10 OPENINGS



MODEL 522-9100
BASE ASSEMBLY, 3"



MODEL 522-9200
PULL SHELF ASSEMBLY



MODEL 522-9300
SPACER ASSEMBLY

- MODULE SIZE: 15-3/4" H x 32-1/2" W x 24" D
- REINFORCED COATED STEEL CASE WITH ANODIZED ALUMINUM FRONT FRAME
ALL SECTIONS HAVE PROVISIONS FOR SECURING ADJOINING SECTIONS
AT TOP, BOTTOM AND SIDES.
- DOORS MACHINED FROM SOLID ALUMINUM ALLOY WITH S/S FRONT PLATE
- NUMBER STRIPS WITH BLACK CHARACTERS ON A BRASS TONE BACKGROUND
SET IN A FRAME WHICH COMPLEMENTS THE S/S DOOR FRONT
- REMOVABLE METAL BOND BOXES
- UL LISTED DOUBLE NOSE FIXED/FIXED LOCKS FINISHED IN BRASS
- FRAME INTERLOCKING HINGES FINISHED IN BRASS
- BASE ASSEMBLY IS COMPLETE WITH S/S TRIM PLATE AND LEVELING LEGS

DO NOT SCALE

American
Vault[®].us

PRODUCT APPLICATION DRAWING
500 SERIES SAFE DEPOSIT BOX
MODEL 515

SIZE	DWG NO	DATE	SHEET
B	20119	01.01.2012	1 OF 1