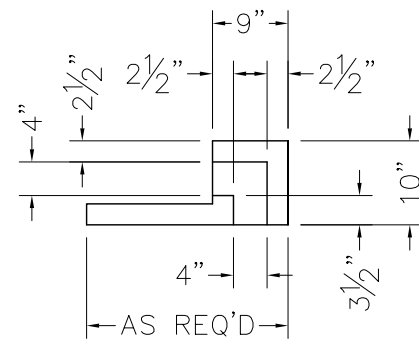
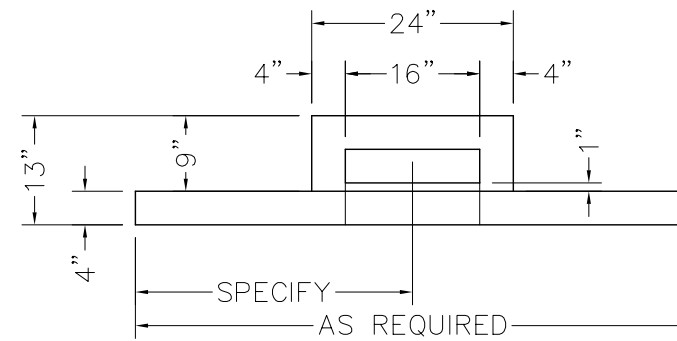


FRONT ELEVATION

MODEL 210-VP, U.L. CLASS M

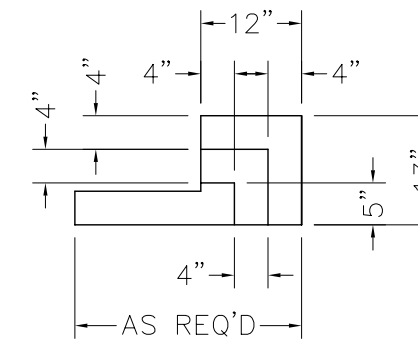


VERTICAL SECTION

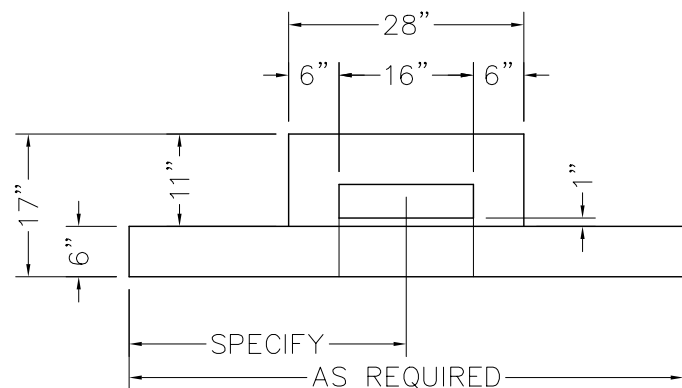


FRONT ELEVATION

MODEL 211-VP, U.L. CLASS 1

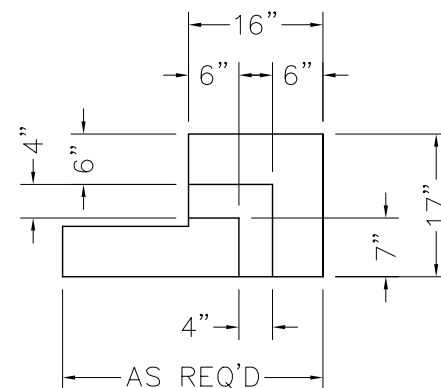


VERTICAL SECTION

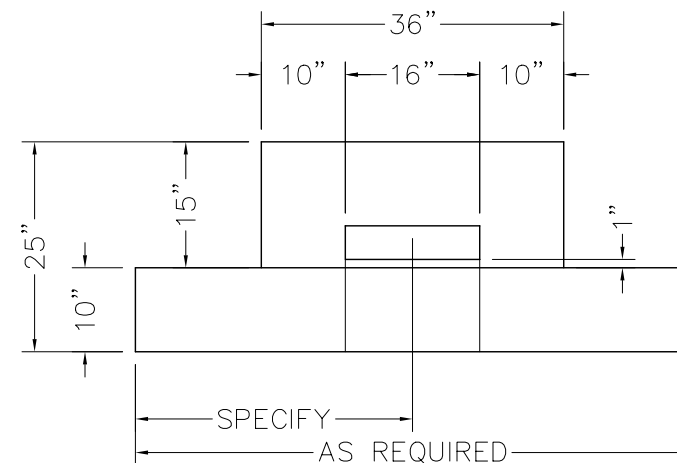


FRONT ELEVATION

MODEL 212-VP, U.L. CLASS 2

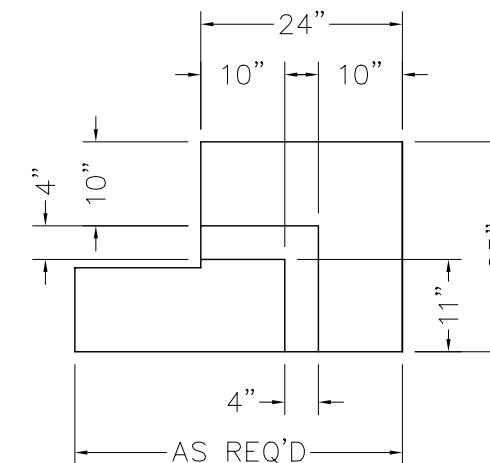


VERTICAL SECTION



FRONT ELEVATION

MODEL 213-VP, U.L. CLASS 3



VERTICAL SECTION

NOTES:

1. VAULT-VENTILATING PORTS (HVAC PORT) ARE USED FOR A SECURE CONNECTION OF AN OUTSIDE VENTILATING SYSTEM THAT PROVIDES CIRCULATING AIR WITHIN THE VAULT.
2. HVAC PORTS CAN BE CAST INTO A MODULAR VAULT WALL OR ROOF PANEL.
3. SPECIFY AT THE TIME OF MODULAR VAULT ORDER.
4. PANELS ARE CONSTRUCTED OF FIBER REINFORCED CONCRETE AND REBAR IN A FIVE-SIDED STEEL PAN. STEEL PAN FORMS INTERIOR OF VAULT WITH EXPOSED CONCRETE ON EXTERIOR.
5. ALL INSIDE ADJOINING SURFACES TO BE WELDED WITH 1" OF 1/8" WELD PER EACH FOOT OF LENGTH.
6. ALL UTILITY CONNECTIONS ARE BY OTHERS.
7. STRUCTURAL DESIGN OF FLOOR AND SUPPORTING FOUNDATION IS BY OTHERS.
8. SEISMIC CALCULATIONS (IF APPLICABLE) ARE BY OTHERS.
9. PANELS ARE SHIPPED "KNOCK-DOWN" TO BE ERECTED AT JOBSITE AS PER SPEC'S FURNISHED.
10. WHERE APPLICABLE FLOOR, CEILING & WALL COVERINGS ARE BY OTHERS. APPROPRIATE UNDERLAYMENT MATERIAL APPLIED PRIOR TO FINAL FLOOR COVERING MAY BE REQUIRED FOR A SMOOTH FLOOR ON INSTALLATIONS THAT INCLUDE FLOOR PANELS.
11. ALL DIMENSIONS ARE NOMINAL. TOLERANCES OF 1/32" PER FOOT OF LENGTH ARE TO BE ALLOWED.
12. THIS STRUCTURE IS NOT DESIGNED FOR ADDITIONAL LOADS APPLIED TO THE ROOF.
13. IT IS THE RESPONSIBILITY OF THE OWNER/ARCHITECT/GC TO ENSURE THAT ALL LOCAL, STATE & FEDERAL ADA REGULATIONS ARE COMPLIED WITH.
14. PANELS ARE CAST WITH LIFT POINTS EACH END. REQUEST (P/N 9040-0002) 3/4" T-12 LIFTING SWIVEL AND (P/N 9040-0006) 3/4"x4" COIL BOLT FOR PROPER RIGGING ATTACHMENT.

CAUTION !

PRIOR TO INSTALLATION READ VAULT PANEL INSTALLATION PROCEDURES AND VAULT DOOR INSTALLATION MANUAL PROVIDED. ONLY PROFESSIONALS EXPERIENCED AND QUALIFIED IN THE INSTALLATION OF MODULAR VAULTS AND VAULT DOORS SHOULD INSTALL THIS PRODUCT.



DO NOT SCALE

American Vault[®].us

PRODUCT APPLICATION DRAWING
HVAC PORT
FOR USE WITH 210 SERIES MODULAR VAULT

SIZE	DWG NO	DATE	SHEET
B	20156	01.01.2012	1 OF 1